



DATA SHEET

R-1001 / R-1002A / R-1002C BRAVO

BRAVA SERIES

ELECTRIC EQUIPMENT



Aluminium and steel



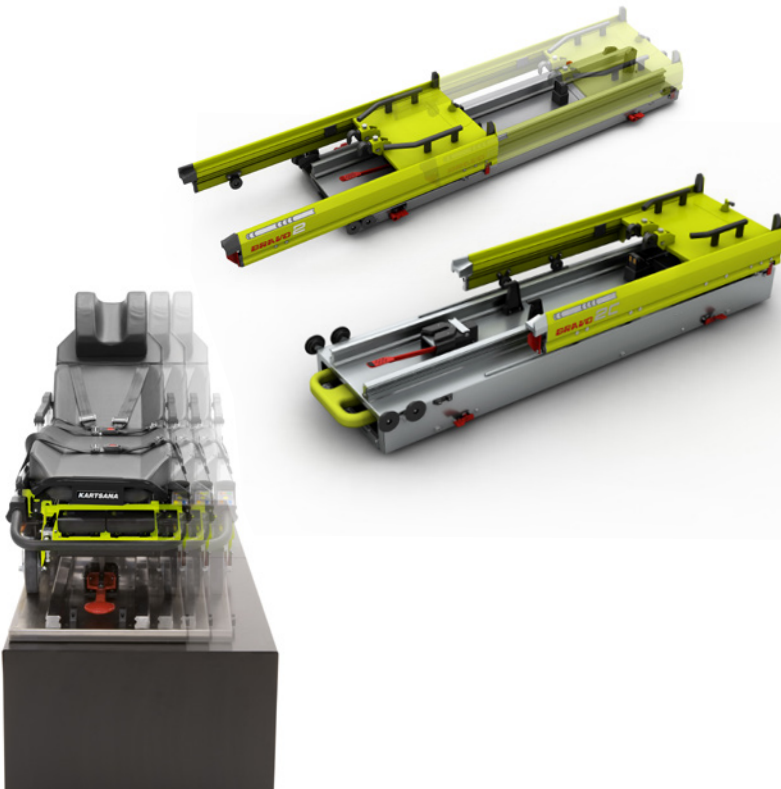
Lateral movement
*R-1002A,
R-1002C



Backboard stretcher drawer
*R-1002C



CERTIFIED
10G



R-1001:

- ▷ BRAVO loading system.
- ▷ Certified 10G.

R-1002A:

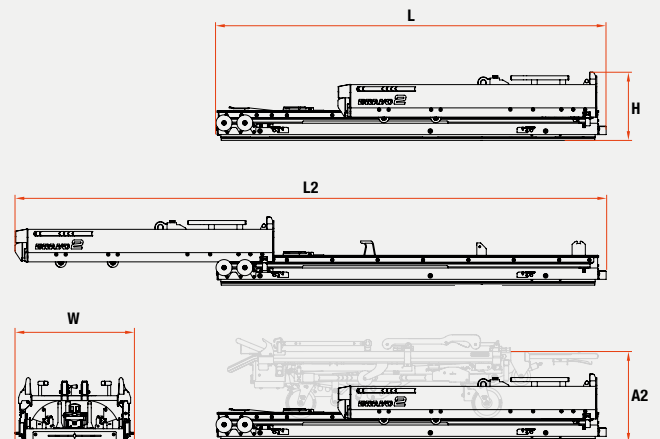
- ▷ Telescopic BRAVO loading system with lateral movement.
- ▷ Certified 10G.

R-1002C:

- ▷ BRAVO 2 loading system, with a drawer for storing a backboard stretcher.
- ▷ Certified 10G.

PRODUCT SPECIFICATIONS

| | R-1001 | R-1002A | R-1002C |
|--|--------|---------|---------|
| H Height (mm) | 340 | 360 | 460 |
| L Length closed (mm) | 2050 | 2065 | 2088 |
| L2 Length open (mm) | 3090 | 3130 | 3145 |
| W Width (mm) | 590 | 632 | 632 |
| A2 Height rail + stretcher (mm) | 509 | 535 | 620 |
| Weight (kg) | 89 | 103 | 117 |



RELATED PRODUCTS



TG-1000 POWER BRAVA



TG-1000 IN



KARTSANA

Life-moving innovation

Narcís Monturiol, 34
08192 - Sant Quirze del Vallès
Barcelona (Spain)

T.: +34 93 715 86 72
info@kartsana.com
www.kartsana.com